

The LINK

February 2019



"Just so you know!"...

Hearts and Heroes

February 9, 2019

*Make Valentine's plans with us!
You have 9 days left to get
your tickets to this
Heartwarming event!*

*Nisku Recreation
Centre
Auction and Cocktails
begin at 5:00pm
Dinner at 6:00pm
Music by Sweet
Vintage Rides 7:00pm
Tickets \$50
Purchase tickets at
www.linx.ngo/donate
or contact Laurie!*

Executive Director Report

It is almost time for Hearts and Heroes... have you got your tickets yet? Things have been progressing very well for our favourite annual fundraiser. The donations are coming in nicely, including a pair of earrings that have been appraised at multiple thousands of dollars! We also have a closed bid already going on for the donation of his listing fee by the Loader Real Estate Group. Evolution Salon will be celebrating their Christmas party as they have purchased two tables! I cannot wait!

We have been partnering with the Leduc Boys and Girls Club for some exciting opportunities at the Premium Outlet Collection Edmonton International Airport Mall. Before Christmas we were able to provide a gift wrapping service. LINX made \$1500 with this adventure. In January there was a "Trade It Up" gift card event at the mall. LINX's share was over \$5000 of gift cards! What are we going to do with these cards...? Stay tuned! Thank you to the volunteers for both events!

March 5-7 we are having our CET accreditation. This is a very hectic time, but we are looking forward to the feedback we will get. File review consents have already gone home. If you have not returned them back indicating your yes or no to the review, please do so soon. I'm happy to answer any questions you may have about the process. As part of our CET preparation, I wanted to remind everyone that LINX's staff are trained in Abuse Prevention and Response Protocol and the Protection of Persons in Care. Information on this can be found at <http://www.humanservices.alberta.ca/disability-services/pdd-fms-abuse-prevention-reporting.html> and <http://www.health.alberta.ca/services/PPC-Act-summary.html>. Again, if you any questions, please feel free to contact me. -Nicole

Executive Director Nicole Fuhse

Email: linxexec@linxconnect.ca,
Emergency cell 587~989~5691

Residential Manager Ronni DeLeavey

Email: linxres@linxconnect.ca
Emergency cell 780~935~2772

Day Program Manager Andrew Giebelhaus

Email: linxday@linxconnect.ca

Business Manager Laurie Savill
Email: linxadmin@linxconnect.ca

Office Assistant Katie Presse
Email: linxinfo@linxconnect.ca

Dates to remember:

February 9 – Hearts & Heroes

February 18 – OFFICE CLOSED

February 27 – LINX Goes **Pink** for Anti-Bullying Awareness

Board Members

Ed Boender – Chairperson

Daniel Roberts – Vice Chairperson

Maria Semrau – Treasurer

Susan Boyle – Secretary

Annis Mattiussi – Director

Ann Kurlovich – Director

Felicia Andrews – Director

Melanie Behm – Director

Brandon Sonnenberg – Director

Ryan McKinney – Client Rep

LINX Bottle Pick-Up

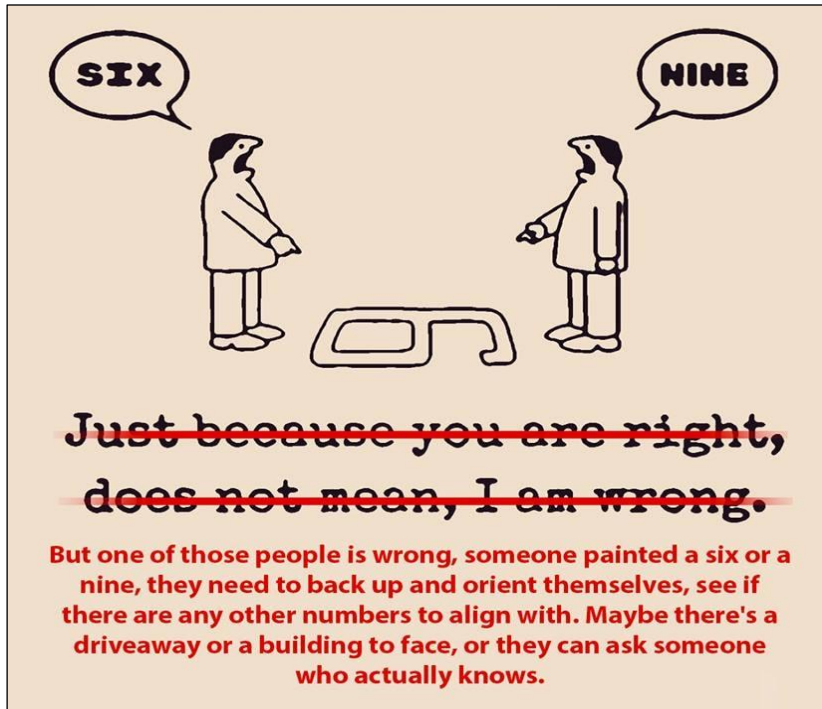
Give us a call, and we will pick up your bottles and give you a charitable tax receipt for your donation!



You can now safely
donate to LINX online at
www.linx.ngo



Day Program Report

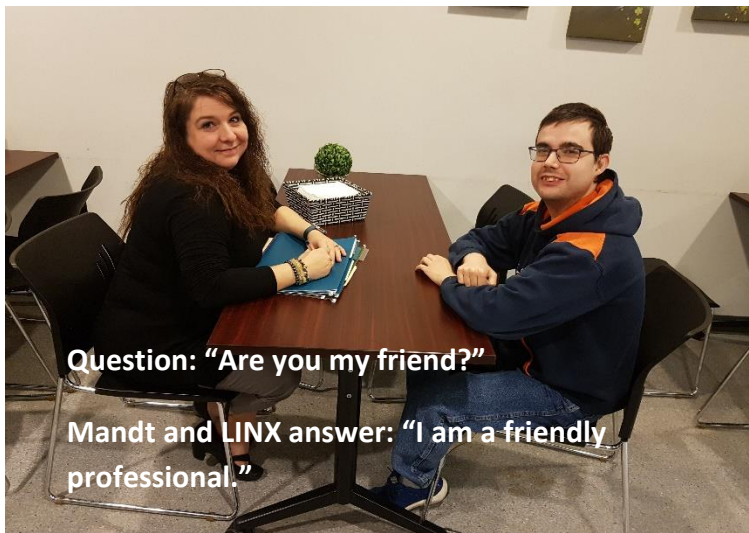


Everybody has their perspective. Everybody is entitled to their opinion. But something is only subjective until you consider the intention behind it. -Andrew

WEDNESDAY February Lunch Snacks are:

- 🐾 February 6 – Corn & Potato Scallop
- 🐾 February 13 – Chocolate Cupcakes
- 🐾 February 20 – Chicken Pot Pie Soup
- 🐾 February 27 – Pasta with Spinach & Chickpeas

Mandt Moment...



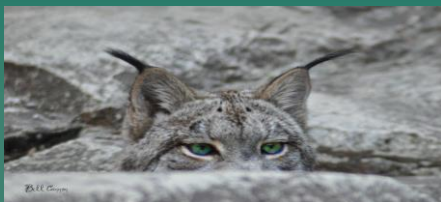
Residential Program Report

Since it is February, let's talk about family and Family Day. Some staff disagree with me when I remind them that we are staff not family. The following are some reasons that I believe and advocate for us all to maintain our boundaries:

1. We will not always have the position in the agency that we have at any given time. Promotion or staff may need a change of pace or duties. I personally have been a job coach, an instructor, an outreach worker, and now the Residential Manager.
2. We may not be a part of the agency that we work for forever. We may move across the country for our spouses work or win the lottery. Sometimes we allow people to retire.
3. The client's guardian may want to move and move the client closer to them.
4. Client needs may change and with that may change the types of services they require. Nursing home, group home, or to the Supported Independent Living Program.

If we have set the client up to believe that we as staff are family and any of the above happens that person has the crushing blow of losing a "family member" rather than a cool staff. I was always taught to keep the boundary lines of being a staff. I was always given instruction to teach someone to be able to live life without me there or to be able to work with and have trust with multiple people.

Also a reminder that the LINX office will be closed on February 18, 2019 for Family Day!
-Ronni



Through our eyes...

By Business Manager Laurie Savill

January has been an exciting month for LINX. Montana's opened up in the Nisku Inn mid-January. Two of our clients have been long term employees of the Nisku Inn and in honor of our partnership with them, all tips were donated to LINX during Montana's soft opening. I was fortunate to be able to attend and can attest the food was great and the service excellent. Make sure you stop in and check them out.

A brand new partnership we created was with the Leduc Roughnecks Atom 2 Hockey Team. Head Coach Brendan Zaporosky and Team Manager April McKibbin decided that not only did they want to develop great athletes but also great community members. As a result, throughout their hockey season, they created their Random Acts of Kindness plan and LINX was fortunate to be part of that plan. April reached out to LINX wanting to have us be the benefactors of their bottle drive. My garage was used as the drop off spot and did they ever fill it! \$482.15 was raised from their efforts! Clients were kept busy over the two following days hauling the bottles to the depot. After leaving my house, the team was headed over to Extendicare to play bingo with the seniors. What a great group of people. Perhaps we should all make our own Random Act of Kindness plan.



Thank you Roughnecks!

Zachary Lammie, Daniel Boyd, Landon Zaporosky, Victoria Trenchard, Ryder McKibbin, Cameron Blackie, Rhett Barber, Corey McClung, Joshua Irvine, Adam Jollimore, Taron Currie, Jaxson Lowe, Evan Edgar

LINX Photography Classes



The LINX Photography Class has been out in about exploring the community of Leduc! From beautiful Main Street to the scenic Civic Centre, here are some reasons our clients enjoy the art of photography...

"I love getting the opportunity to explore the outdoors while taking pictures!"

"My favourite part about Photography Class is trying out new things when I edit the pictures I take."

"I am grateful to be a part of a class that gets me outside in the beautiful weather. It's very relaxing."



Our "... of the month" club!

There are so many people who make our world a better place. So, we have decided they needed individual recognition. Please help us celebrate our Citizen of the Month, Residential Staff of the month, Day Staff of the Month, and Employer of the month. If you see someone in any of these categories that you would like to see recognized, please let us know!

Citizen of the Month

David Bendza! David has been a long time client of LINX and Leduc Works, prior. Throughout the past few months, David has displayed fantastic growth in his flexibility and understanding of change around him. Keep up the good work, David!

Day Staff of the Month

Karla Grunwald! Karla started with LINX at the end of November 2018, making her LINX's newest Job Coach. In her time here, she has displayed a keen understanding of what's expected of a Job Coach, instilling a motivation and positive energy within her peers as well as the clients she works with. Welcome to the LINX team, Karla, and thank you for what you bring!

Employer of the Month

Nisku Inn! Nisku Inn has recently gone through some pretty big changes as of late, including an impressive facelift on the in and outside of their building. With its grand opening of their Montana's Restaurant, they held a dinner event over their first weekend, with proceeds going to LINX to better serve our clients. Thank you to everyone over at the Nisku Inn for your strong and continuous support.

Residential Staff of the Month

Alesha Reid Alesha has helped the residential program extensively through out the last month. Very short notice she has accepted emergency respite. She also pinch hit for the Outreach program while we are looking for the right candidate. Thank you for being a part of the team.

LINX Employers

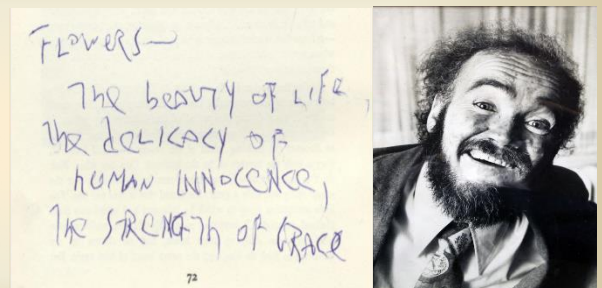
Abaco	Co-op Grocery	Joe's Big City	No Frills	Silver Shears
Agapeland	Days Inn & Suites	Dogs	Notre Dame	Sobeys Beaumont
Best Western Plus	Dollarama	Kosmos	Petro Canada Nisku	Spence Corrosion
Black Gold Real Properties	Evolution Sports	Leduc Florists	Planeview Place	St. Paul's Anglican Church
Bone & Biscuit	Extencicare	Leduc Library	Ricky's All Day Grill	Staples
Boston Pizza	Flaman	McDonalds Leduc	Safeway	Subway Leduc
Canadian Tire	Gateway Family Church	McDonalds	Salem Manor	Common
City of Leduc	Communications 2000	Sparrow	Salvation Army	Wal-Mart
		Nisku Inn	Second Glance	Zulu

Christy Brown (1932-1981), Cerebral Palsy-

An Irish writer and painter who had cerebral palsy yet was able to write and type with the toes of one foot. His most recognized work is his autobiography, titled *My Left Foot* (1954). In 1989, it was made into an Academy Award winning film starring Daniel Day-Lewis as Brown.

"Flowers – The beauty of life, the delicacy of human innocence, the strength of grace."

https://en.wikipedia.org/wiki/Christy_Brown



LINUX Employers

f s z v i q l b m y e x v g d i d b a m h a q k d p e z q l v v f u y e w q f x
r e g v j k v r w c f g b a b j e n h c w c l o m m z e v y k q k n a r b z x r
t r t o u k s i n v o r y s b n w d r d c x n a k p c p r q m g s f w i e e b t
s x b m d k l i h m t s x c o h l u s o s t r o p s n o i t u l o v e t n k i j
x i n k e y q x p w i y c a s h h p e n s b l o a x o h u y x h y o f n e j l c
y m l w w i t p k n x k c x l c y e t a s t s i r o l f c u d e l t a a n g n x
e m d v l n l i n k s q j x y q b z p l r y r f e j v w d z w b j a s i n p e w
m t r v e r v s c m t t e l v r p m c d o n a l d s l e d u c o j o y d m v i o
c s q a x r u z r g r u i m y y c p t s l l i r f o n e n r n s a s x a t l f i
b h u a n i s m z a i m r e e s z c z s a h z i c r w m o k v t n n p n o a l c
w c v b t o w h b t a b p f c q y p e p s i z a o e v n i t y o f z m a y f i x
b r u e w c i y e f z f s l n r x q r a b t v c s a a n s z n n i d w c z t y l
n u s q o a l t y a m c d e a v g h g r s a b n i m s l o l e p f d e w y a t w
c h v y l g y a a c r k o r o n v z b r z u o v m p b g r e k i n r y o i d e r
f c c f k q w l w v x s b i h j e r y o t i r e x q z b r c l z w c f n s a z i
j n a a l e o x e s l i w c s s u v p w t j l y a f e u o p y z f l k o b n q c
c a z e t a s t e d l a b j i r e g i a a a b v z s s l c q l a e i y t d a m t
h c k a u t m l z c u d s l s c p i c e s z h b t c q u e a a d e z m r g c s r
b i g y d j p a u a e c o k a d s i t o w r z w b a k z c a u y n z i e t o o a
t l j r f a l d n t o t c l x r n i g r s p e t b n o w n c x a r m y d p r b d
v g a b t p e b v j v b i o l u b t p n e s l n q k s s e e a p j w i a n t e g
m n y s s l b a p h w k e u m a h q u h t p i a q f m q p f s m k k y m s e y j
v a y e t t l c w u d u z m c m r g v e z s o w c k o n s b o o g d v e n p s d
g s n y r e c o r g p o o c o s o a r r k z s r f e s m m u s g r r v y z a b d
z l a s p a u s z z x c y b v f i n m u p s j p p s e c o n d g l a n c e t e j
n u f z r m o e n r t e m r o o p b i a f z k d i l w a l m a r t j d o p g a w
k a c t o y y f r o d x v n d l m n q o s d w o c x a b z y c n t v z m b o u d
b p q i s x k b m a f d m q u p n t o a t i u s y f a e o x f q e a h o f q m h
y t u w e y c g e q c m e s l g q y w x x r h d e c n c r s s g p l c q w h o r
p s e b n x x e o y t i b w l i m k a o v i w i e n w c e d e e i b f q v f n u
t a j p a k p t i q a k d k g q m b z j e z n s z w x s y o l j a a q s s d t a
a g a p e l a n d q w a h n b c a d c o z n m a z g f n o q c o f y l f l s c i
x e f x x e j x j l y p n v e c k k p h k p o u p v o s s d u r g d f x q q z a
c e v g k g s q j d z e v t o t h c w o o n x b r p h j o o x h m k w c o n m e
x y c z q k z z i v q l t h f f x i f q j m x m n m c q v j d q w k c x y h j n
r i c k y s a l l d a y g r i l l e q y o w g f m s z r n s a t c a f a w q y b
w n w p l k o a d q k h f b i x d c t d e z p m a f w c c j k x v c s p l c m g
c f k x e y j q j v q i b u h g v w w i j k e v y k c m y z d m y f s a q b j b
c l z c h x s y c x x d h h y o s z g o d x f x o j t q p x n p f x f o p b b m
o j w z s f v d k v a m p u a i z d n e o g r n j o e a e t b k a d i l l i f j

- | | | | | |
|------------------------------|-------------------------|-----------------------|-------------------------|------------------------------|
| ✿ Abaco | ✿ Co-op Food | ✿ Joe's Big City Dogs | ✿ Notre Dame | ✿ Sobeys Beaumont |
| ✿ Agapeland | ✿ Days Inn & Suites | ✿ Kosmos | ✿ Petro Canada Nisku | ✿ Spence Corrosion |
| ✿ Best Western Plus | ✿ Dollarama | ✿ Leduc Florists | ✿ Planeview Place | ✿ St. Paul's Anglican Church |
| ✿ Black Gold Real Properties | ✿ Evolution Sports | ✿ Leduc Library | ✿ Ricky's All Day Grill | ✿ Staples |
| ✿ Bone & Biscuit | ✿ Extendicare | ✿ McDonalds Leduc | ✿ Safeway | ✿ Subway Leduc |
| ✿ Boston Pizza | ✿ Flaman | ✿ McDonalds | ✿ Salem Manor | ✿ Common |
| ✿ Canadian Tire | ✿ Gateway Family Church | ✿ Sparrow | ✿ Salvation Army | ✿ Wal-Mart |
| ✿ City of Leduc | | ✿ Nisku Inn | ✿ Second Glance | ✿ Zulu |
| ✿ Communications 2000 | | ✿ No Frills | ✿ Silver Shears | |